



# FIRESTOP CENTRE

Authorised New Zealand Distributor  
Ph (09) 483 4000 www.firestopcentre.co.nz

## FIRESTOP Duct Wrap-38 Rectangular Duct (up to 1800 x 1000mm) 60 minute Floor / Ceiling System Internal or External Fire

**FireTS Lab**

Report AR23108, Pages 8, 9-11, 26, 29  
AS1530.4-2014 AS4072.1-2005

System ID# FC285

<b>Products</b>	FIRESTOP Duct Wrap-38 Protecta FR Board Protecta FR Acrylic or FIRESTOP Ultra
<b>Application</b>	Fire stopping of rectangular duct penetrating a floor/ceiling system
<b>Construction</b>	Floor/Ceiling system comprised of minimum 16mm fire rated plasterboard ceiling, minimum 90mm timber joists and 19mm plywood floor above

### Fire Classification

NOTE: For general instructions on installing FIRESTOP Duct Wrap-38 see [Installation Instructions](#) sheet on Firestop Centre website.

FRR 60/60/-  
Below floor single layer wrap  
Above floor single layer wrap  
FRR 60/60/30  
Below floor single layer wrap  
Above floor single layer with 900mm second layer  
FRR 60/60/60  
Below floor double layer wrap  
Above floor single layer wrap with 1900mm second layer. For ducts above 800x800mm (or equivalent area) add 860mm third layer

**NOTE:** Where floor/ceiling FRR is less than above reduce penetration rating to match the floor.

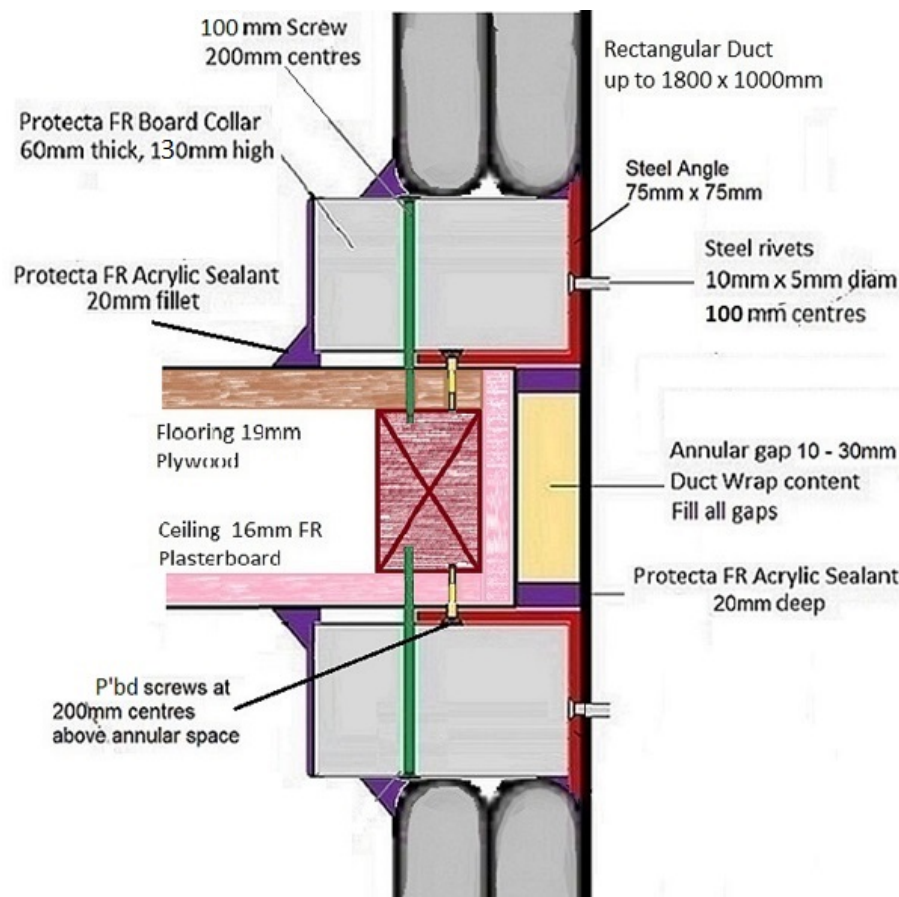


**FIRESTOP**

Firestop Centre Ltd  
657 Great South Road  
Penrose, AUCKLAND

### INSTALLATION INSTRUCTIONS

1. Aperture to be framed and lined with 13mm FR plasterboard and have annular gap 10 - 30mm.
2. Sealants permitted for this system are Protecta FR Acrylic or FIRESTOP Ultra. Either may be used.
3. Place unfoiled Firestop Duct Wrap material compressed nominally 30% into the annular gap with 20mm recess top and bottom. Ensure any gaps in corners, etc are filled to the required compression.
4. Seal top and bottom of the floor with 20mm deep sealant. Then apply a bead of sealant to the duct and the floor/ceiling prior to attaching the angle.
5. Attach 1.2mm thick steel angle 75mm x 75mm top and bottom. Fix to the duct with steel rivets 10mm x 5mm diam at 100mm centres in the centre of the angle. Fix to the floor and ceiling with plasterboard screws (min 32mm) at max 200mm centres high enough to clear the annular space and lining. Ensure a fixing at max 50mm from each end of an angle section. Apply sealant to any joints or corner gaps.
6. Apply a bead of sealant to each face of the angle. Construct a collar minimum 130mm wide from Protecta FR Board (60mm 2-sided) and fix directly to the floor and ceiling with 8-10g x 75mm screws with penny washers at 200mm centres (passing above the steel angle). Ensure a fixing at max 50mm from the end of each frame section.
7. Fill any joints in the collar with sealant. Then apply a 20mm fillet at the floor/collar joint, ceiling collar joint and the duct/collar/angle joint. Finally cover the exposed cut edges of the collar with sealant or Protecta FR Coating.
8. Install the Firestop Duct Wrap layers as specified and a sealant fillet at the wrap/collar junction.



As a part of our policy of on-going product development and testing, we reserve the right to modify, alter or change product specifications without giving notice. All information contained in this document is given in good faith and is provided for guidance only. Any drawings provided are for illustrative purposes only. As Firestop Centre has no control over the methods or competence of installation and of prevailing site conditions, no warranties, expressed or implied are intended to be given as to the actual performance of the product mentioned or referred to herein and no liability whatsoever will be accepted for any loss, damage or injury arising from the use of the information given.